

# bathler

A smooth Corian® bath packed with hi-tech features invisible to the eye when idle and at full swing when needed

At the touch of a button the keypad lights up and the bath fills to perfection adding scents and bubbles. The TV pops up and so does a chilled bottle of champagne and glasses. You can spend hours from relaxing in harmony with 5.1 surround sound, aroma and chromatography to surfing the net and social networking or enjoying the built-in whirlpool system



# bathler

## Have your bathtub the way you imagine it

We realise that our customers may not always find the bathtub they desire, whether their bathroom is too large for standard products or the shape of bathtub they want has not yet been created – we set up to fulfil the need for personalised bathtub making

Our approach is simple. We listen, design and create

Every bathtub we produce is crafted with the customer in mind, creating bespoke solutions to meet even the most extravagant of requirements. We balance beauty with performance to give your bathomatic bathler the unique ID by using an exhilarating mix of latest technology and precision engineering

Each bathomatic bathler bath is made to order and fulfils your wants and needs. It can be of a shape you want and with features never perceived before. We love challenges; we know that if you dare to think of feature for your bathtub you rightfully deserve to have it and we will turn it into a reality

## bathomatic bathler 005

Having a blank canvas with set of brushes is often a daring challenge and to lead in the bathtub creation below are some of the features of bathomatic bathler 005, which does not limit what we can do.

## Fully automated bath management system

It incorporates the latest technological features of bathomatic eco ultimate whirlpool with no visible finishes. All components are hidden under the skin of the bath as we believe technology should be experienced and not seen.

- Water depth control
- Temperature control
- Programmable Presets
- Scents and bubble bath dispensing
- Chromatherapy – RGB LED light control
- Jets control - whirlpool system with 28 “Corian® stealth jets”
- Blower control

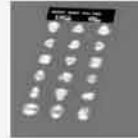
The bath filling and draining are from a discreet opening at the side bottom of the bath or through the whirlpool jets pipework.

## Whirlpool

Water is pressurised into a double wall cavity and springs from the jets in ergonomically drawn clusters to suit the shape of your body. “Corian® stealth directional jets” are available for flexibly in jet control

## Control

The easy to use touch interface “sleeps” under the surface of the bath and comes to life at a touch.



## Automation system, smart phones, PC and tablets control

A LAN interface allows control from any location via your Home Computer Network. There are native smart phone applications and modules for the major home automation systems. Some of these are available on our web site, Crestron and Apple Store



## Vision - 24” Pop-Up TV

Completely hidden when not in use - sleek and beautiful when in full swing. This water proof TV has silent hoist lifting and is full of features surpassing what is needed in the bathroom

## Champagne chillier

Hidden when not in use and silently brought up when required. Auto chill when a bath is drawn utilising Peltier effect chiller, which cools the champagne by outputting the excess heat to bath water and maintaining perfect temperature as long as needed.

## Audio

Stealth speakers excite the bath material in 5 carefully chosen locations to reproduce perfect sound for a 5.1 surround sound

## Keyboard

Solid-state pop-up keyboard with integral pointer pad

